



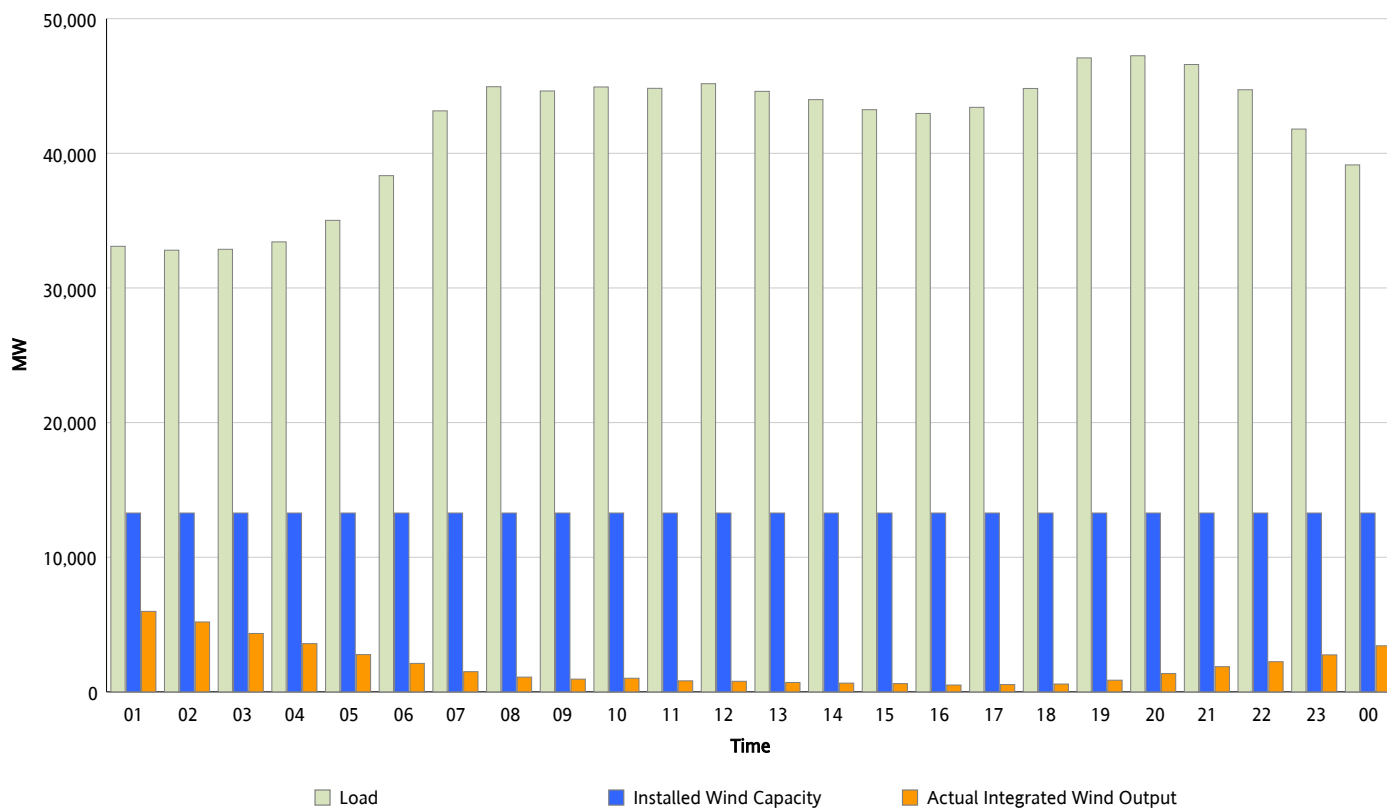
ERCOT Grid Operations

Wind Integration Report : 02/05/2015

| | |
|----------------------|-----------|
| Peak Load | 47,248 MW |
| Load Peak Hour (HE) | 20 |
| Wind Over Peak | 1,358 MW |
| Wind Record 12/25/14 | 10,957 MW |
| Max Wind Value* | 6,452 MW |
| Wind Peak Time | 00:00 |
| Wind Integration % | 19.29 % |

Hourly Average Actual Load vs. Actual Wind Output

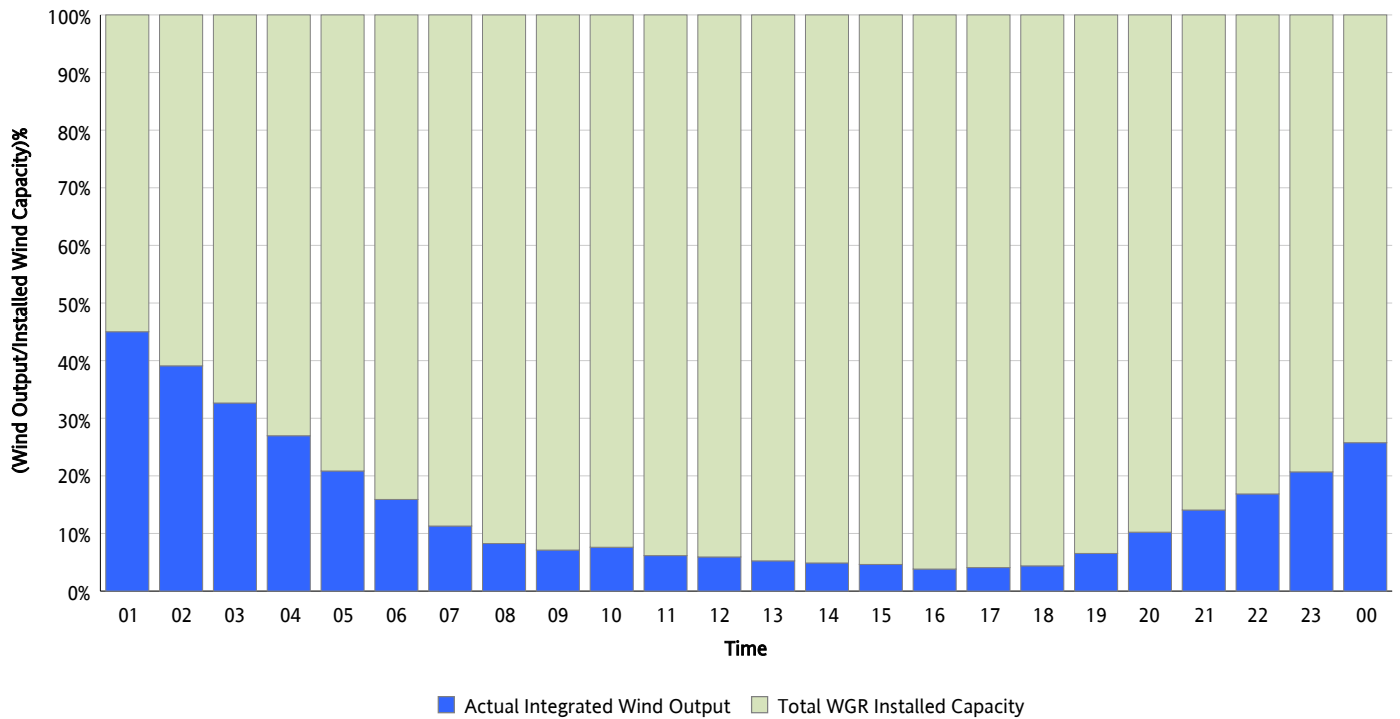
02/05/2015



** Wind Record and Wind Max represent instantaneous values and the rest of the values are integrated over the hour.
Capacity numbers used in the graphs are based on the expected commercial operation date of each Wind Generation Resource.*

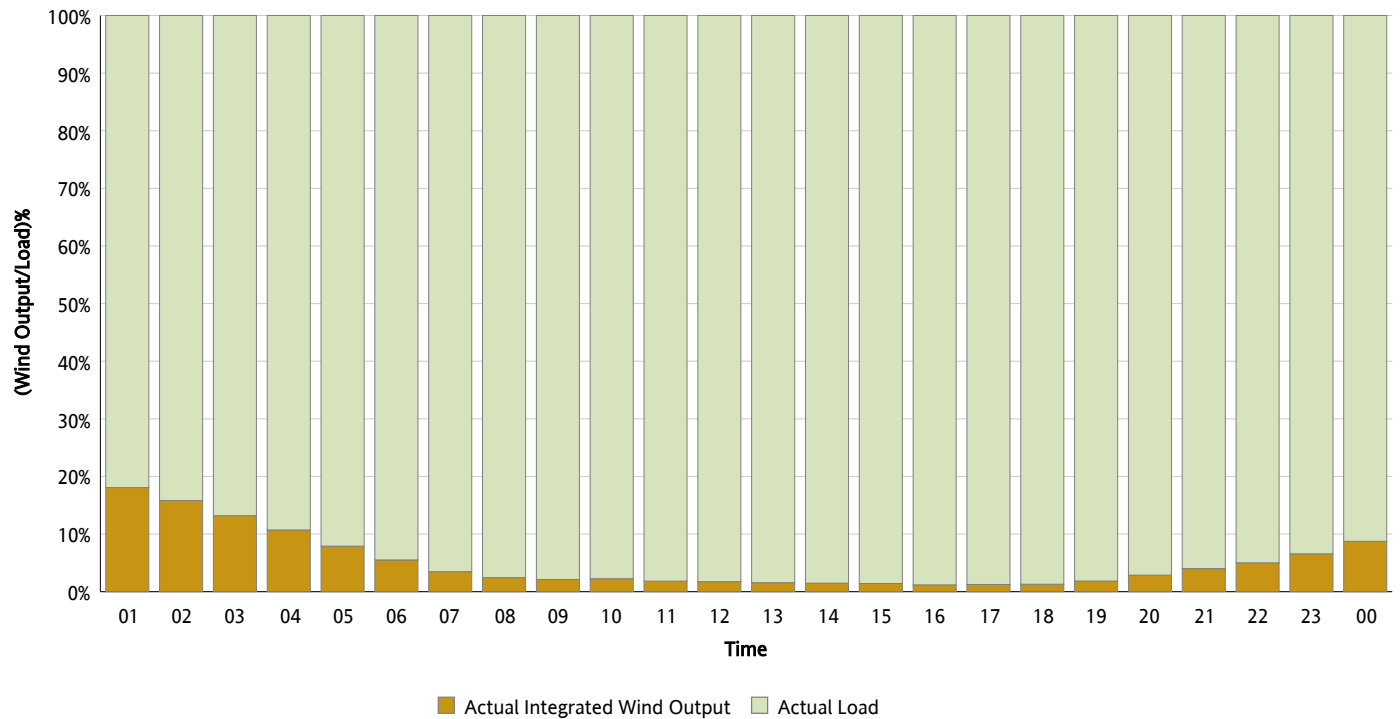
Actual Wind Output as a Percentage of the Total Installed Wind Capacity

02/05/2015



Actual Wind Output as a Percentage of the ERCOT Load

02/05/2015



ERCOT Load vs. Actual Wind Output

01/29/2015 - 02/05/2015

